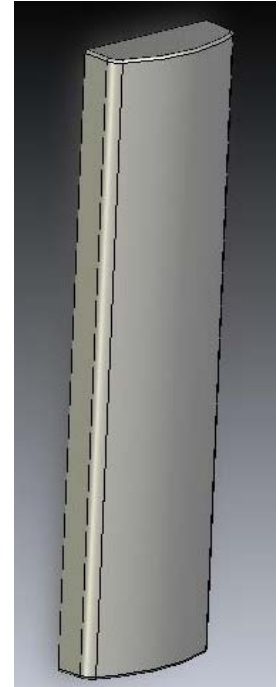




**Model No.  
WMX-60-35V-2**

**3.5GHz WiMAX Sector  
Antennas**

- Broadband Sector Antenna designed to suit WiMAX Applications
- Compliant to ETSI EN302 085 Class2.
- Lightweight Durable Construction
- Optional Features –
  - Shaped Elevation Patterns
  - Upper Sidelobe Suppression
  - 0°, 2°, 4°, 8° Downtilts available



**Electrical Specifications**

Operation Frequency Band	3.3GHz - 3.8GHz
3dB Azimuth Beamwidth	60°+/-5°, 90°+/-5° or 120°+/-5°
Elevation Beamwidth	7.0°
Gain (Full Co-polar gain)	15.3dBi
Return Loss	>15dB
Cross Polar Discrimination	>20dB
Regulatory Compliance	ETSI EN302 085 Class2
Electrical Tilt	0°, 2°, 4°, 8°
Front to Back Ratio	>25dB
Polarization	Vertical or Horizontal
RF Terminations	Center fed N-Type

**Mechanical Specifications**

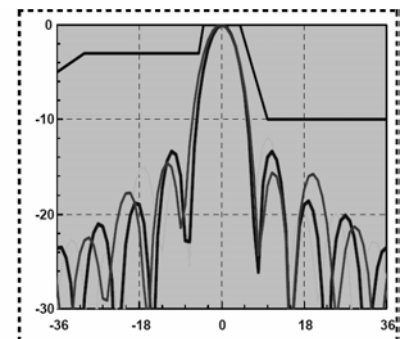
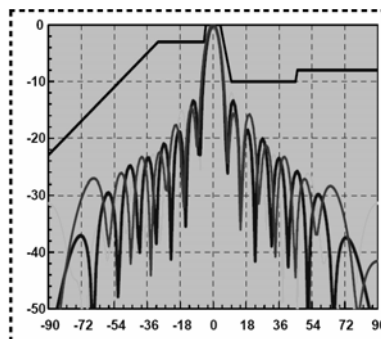
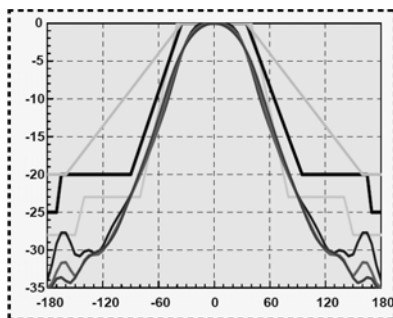
Antenna Dimensions (LxWxD)	710 x 155 x 75 mm (28 x 6.2 x 3.0 inches)
Antenna Weight	4.7 kg (10 lbs)
Radome Material	UV Stabilized ABS
Color	WiComm White (Matt off-white)
Hardware (Mount) Material	Stainless Steel Bkts and Hardware

**Environmental Specifications**

Max. Wind Area	0.04 m <sup>2</sup> (0.4 ft <sup>2</sup> )
Max Wind Load (@ 100 mph)	98 N (22 lbf)
Max. Wind Speed	241 km/h (150 mph)

**Mounting Options**

Standard Mount Kit	Included
Adjustable Tilt	MTG-AT-008



3.3, 3.5, 3.8GHz. (ETSI EN302085 class1,2,3)

WiComm Technologies, LLC  
Ph: 919-760-7664  
1228 Magnolia Hill Rd Garner, NC, 27529

Website: [www.wicommttech.com](http://www.wicommttech.com)  
Sales: [sales@wicommttech.com](mailto:sales@wicommttech.com)  
Technical: [eng@wicommttech.com](mailto:eng@wicommttech.com)