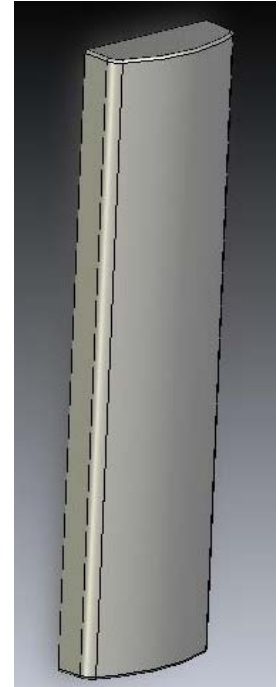




Model No.
WMXHP-60-35V-2

**3.5GHz WiMAX Sector
Antennas (High Performance)**

- Broadband Sector Antenna designed to suit WiMAX Applications
- Compliant to ETSI EN302 085 **Class3**.
- Lightweight Durable Construction
- Optional Features –
 - Shaped Elevation Patterns
 - Upper Sidelobe Suppression
 - 0°, 2°, 4°, 8° Downtilts available



Electrical Specifications

Operation Frequency Band	3.3GHz - 3.8GHz
3dB Azimuth Beamwidth	60°+/-5°, 90°+/-5° or 120°+/-5°
Elevation Beamwidth	7.0°
Gain (Full Co-polar gain)	15.3dBi
Return Loss	>15dB
Cross Polar Discrimination	>20dB
Regulatory Compliance	ETSI EN302 085 Class3
Electrical Tilt	0°, 2°, 4°, 8°
Front to Back Ratio	>25dB
Polarization	Vertical or Horizontal
RF Terminations	Center fed N-Type

Mechanical Specifications

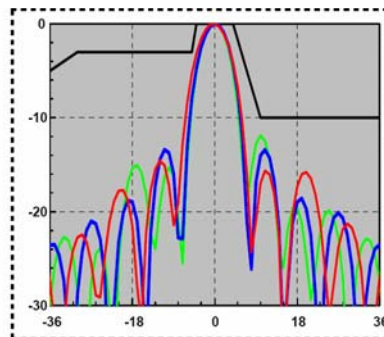
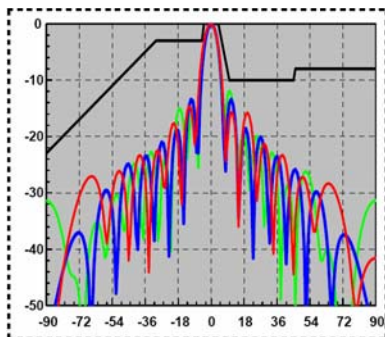
Antenna Dimensions (LxWxD)	710 x 155 x 75 mm (28 x 6.2 x 3.0 inches)
Antenna Weight	4.7 kg (10 lbs)
Radome Material	UV Stabilized ABS
Color	WiComm White (Matt off-white)
Hardware (Mount) Material	Stainless Steel Bkts and Hardware

Environmental Specifications

Max. Wind Area	0.04 m ² (0.4 ft ²)
Max Wind Load (@ 100 mph)	98 N (22 lbf)
Max. Wind Speed	241 km/h (150 mph)

Mounting Options

Standard Mount Kit	Included
Adjustable Tilt	MTG-AT-008



WiComm Technologies, LLC
Ph: 919-760-7664
1228 Magnolia Hill Rd Garner, NC, 27529

Website: www.wicommmtech.com
Sales: sales@wicommmtech.com
Technical: eng@wicommmtech.com